



# Van Tyres and Your Safety

Tyres on light commercial vehicles (LCVs) lead a hard life, carrying heavy loads or doing multiple drops, often in tough working environments. Read our guide which provides tips on regular checks to ensure your vehicle tyres remain safe and legal.

**Disclaimer:**

The information provided in this guide is for general information purposes only and is correct to the best of our knowledge and belief on the date first accessed by you. While we have taken reasonable measures to ensure the accuracy of the information presented, neither KINTO UK Limited nor the author can be held liable for any actions, omissions or consequences resulting from use or reliance on this information. Any information contained within this document does not constitute legal, financial, or professional advice and should not be relied upon as such.





## Van Tyres and **Your Safety**

Whilst being used to deliver loads, the tyres on light commercial vehicles (LCVs) are often driven on rough ground and experience repeated kerb scuffing which can cause levels of damage and wear way beyond that of a car tyre. As a critical vehicle component, it's important to carry out regular checks on vans of all ages to ensure their tyres remain safe and legal.

As well as the increased risk of road traffic accidents, poorly maintained tyres can often result in vehicle downtime, missed appointments or increased vehicle repair costs. Carrying out regular tyre checks can prevent these problems, helping to keep drivers safe on the road as well as saving businesses both time and money.

Equally, van drivers have a duty of care to ensure their vehicle is safe and roadworthy. Drivers found to be driving on illegal tyres face personal fines of up to £2500 for each illegal tyre plus three penalty points, irrespective of whether the van is company owned or not.



### Tread Depth

Adequate tyre tread depth is vital for vehicle safety. Vans are particularly vulnerable as their heavier mass means stopping distances are longer than those of cars. Insufficient tread depth can extend stopping distances even further in wet conditions.

Current UK law requires that the tyres fitted to vans must have a minimum tyre tread depth of at least 1.6mm across the central three quarters of the tread and around its entire circumference. Drivers found in breach of this law face a personal fine of up to £2,500 for each illegal tyre and 3 penalty points. It's simple to check your tread depth by using a 20p coin. If the outer band of the coin is visible when inserted into the tyre tread grooves, the tyre may not have sufficient tread depth and should be examined further by a professional.

# Van Tyres and Your Safety

## Tyre Pressure

### 1. Safety

As vans frequently carry loads, it's essential that tyres are inflated to the correct pressure. When a tyre is under-inflated (or overloaded), excess heat builds up within the tyre, which greatly increases its likelihood of experiencing a rapid deflation. Tyre failure of this nature is a major safety risk as it can cause the driver to lose

control of the vehicle, and can also put other road users at risk.

Van operators should ensure that their tyres are inflated to the correct pressure depending on whether the vehicle is laden or unladen. Details of the correct pressures can be found in the vehicle handbook.

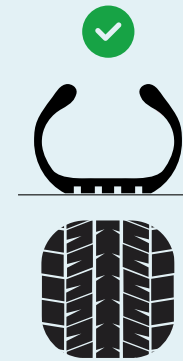
### 2. Vehicle Handling

Tyres are complex components that have been engineered to

work in harmony with the van's braking, steering and suspension systems. When a tyre is under-inflated, it contains insufficient air to support the weight of the vehicle properly. This can adversely affect acceleration, braking and cornering, potentially making driving unsafe.

### 3. Fuel Economy

By keeping tyres properly inflated, van drivers can travel

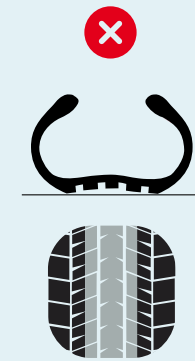


further on each tank of fuel and reduce their CO<sub>2</sub> emissions.



### 4. Premature Tyre Wear

Under-inflated tyres experience rapid wear in the shoulder area of the tread as more of the load is supported by this area. Driving



on over-inflated tyres results in higher wear in the centre of the tread. Keeping tyres inflated to the recommended pressure for the vehicle and load ensures an even contact distribution and a more even wear rate, helping to make the tyres last longer.

## Tips for Correct Tyre Maintenance

### Tyre Pressure

1. Use a reliable and accurate pressure gauge to check the pressure of van tyres at least once a month or before a long trip.
2. Check the pressure in all tyres, including any spare tyre(s) as well.
3. Tyre pressure should be checked against the vehicle manufacturer's recommended operating pressures for the load being carried.
4. Check the pressure when tyres are cold or when the vehicle has travelled less than two miles.

5. When checking pressures, give the rest of the tyre a thorough visual inspection. Remove any stones and other objects embedded in the tread. Look out for any cuts, lumps or bulges.
6. If you are unsure on any aspect of tyre pressure or tyre condition take your vehicle to an approved fitting centre and speak to the experts.

### Condition of Tyres

1. Clean the dirt from the valves and make sure that caps are fitted to the valves on each wheel.
2. Remove any stones and other objects embedded in the tread.

3. Look out for any bulges, lumps or cuts to the tread and sidewalls as well as any evidence of surface cracking or grazing. Any damage should be inspected by a tyre professional.
4. Repairs to van tyres must only be carried out by a tyre specialist, and must be done in accordance with the current British Standards.
5. The suspension alignment should be checked and corrected as necessary if the tyres show signs of excessive, uneven or irregular wear.
6. Any unusual vibration or air loss must be examined immediately by a tyre professional, as these could be signs of potential tyre failure.